

2024-25 CATALOG



GARAGES



CARGO VANS



TRAILERS

**Quality,  
American-made  
aluminum cabinets**




*Dear Valued Customer,*

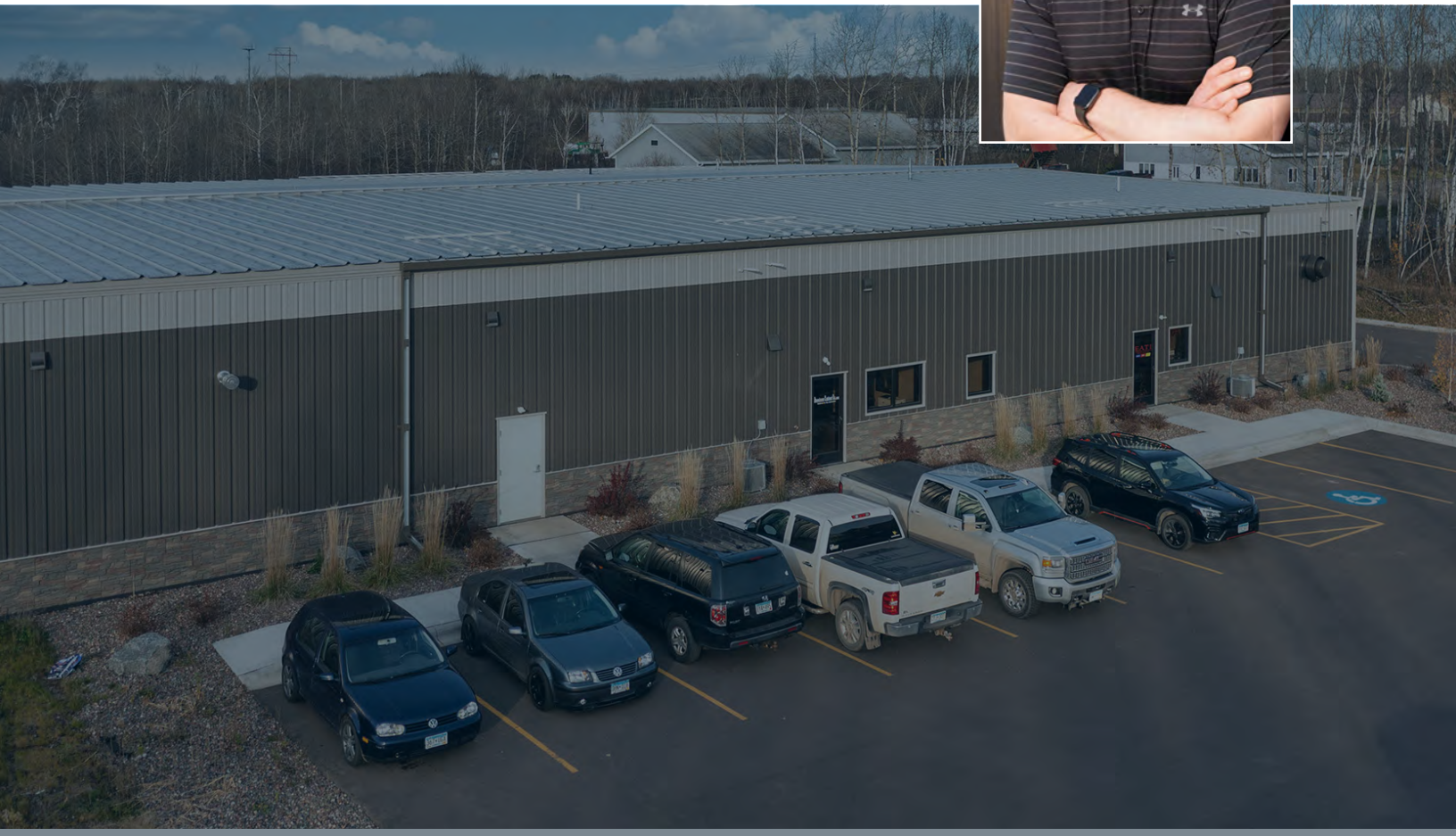
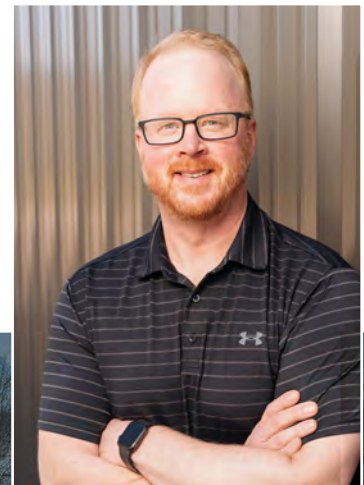
At Aluminum Cabinet Co., we believe in crafting solutions that stand the test of time. Whether you're outfitting a garage, cargo van, trailer, or emergency response vehicle, our cabinets are built with one guiding principle: uncompromising quality. From our marine-grade aluminum's strength to our custom designs' precision, we ensure every piece delivers durability, functionality, and style.

Our signature powder-coated finishes, the industry-leading Dura-Latch system, and attention to detail reflect our commitment to excellence. Whether you need a standard size or a custom fit for your project, our cabinets provide unmatched strength and longevity. They're designed to be installed easily and to ensure even the toughest environments.

As you explore our range of options, including storage for garages, trailers, and more, know that every product comes with our promise of quality and care. Thank you for considering Aluminum Cabinet Co. as part of your next project. We look forward to building something great with you.



**Kelly O'Toole**  
Founder & President





Made in  
the USA

# Aluminum cabinets. In our blood. In our name.

## TABLE of CONTENTS

### **GARAGES**

**10**

Upgrade Your Garage with Durable, Custom Aluminum Storage Solutions

### **CARGO VANS**

**22**

Optimize Your Space: Lightweight, Secure Cabinets for Cargo Vans

### **TRAILERS**

**34**

Built for the Road: Customizable Cabinets for Trailers

### **EMERGENCY RESPONSE**

**52**

Critical Response Ready: Cabinets for Fast, Efficient Emergency Access

### **STORAGE OPTIONS**

**58**

Maximize Every Inch: Custom Storage Solutions for Every Need



**Garages  
Trailers  
Cargo Vans  
Emergency Response**



# Premium Aluminum Cabinets

**Quality through and through**



# INDUSTRY-LEADING FEATURES

## Forever Features

Built with marine-grade aluminum out of 95% materials from the Midwest and 100% labor in the United States, our products are always solid, sturdy, and sustainable.



LIMITED LIFETIME WARRANTY

**DURA-TOP**  
COUNTERTOPS



**RIGID**  
EXTRUSIONS

We offer versatile *Dura-Top* countertop options, including stainless steel commercial grade, stainless steel laminate, gray laminate, and butcher block, allowing you to choose the perfect surface for your specific needs. For added strength and durability, the cabinets feature rigid extrusions, ensuring they can handle the most demanding environments. We offer a selection of vibrant powder coat colors to further enhance customization, making it easy to match the cabinets with any aesthetic.



**GAS SHOCK**  
DOOR OPENERS



**ADJUSTABLE**  
**SHELVING**



**RADIUS**  
CORNERS



**DURA-LATCH**  
DRAWER SYSTEM

With 250 lb. full-extension drawer slides, adjustable shelving, and powder-coated finishes, these cabinets are functional and built to maintain their quality over time. *The Dura-Latch* system ensures drawers remain securely closed, while radius corners and gas shock door openings add safety and convenience.



**250 LB**  
DRAWER SLIDES



# Countertops

Top off your cabinets with our first-rate countertops. With several options to choose from, you can customize your space to fit the look you're after. Don't care? We'll help you choose the best countertops for your garage, home, or trailer. Whatever you're working on or cooking up, we've got you covered.

## Countertop Features

- Extruded aluminum frame with a clear anodized finish for strength and durability
- 2" extruded aluminum backsplash available
- 5/8" particle board backing for countertop
- Gasket seal around entire laminate countertop
- Molded end and corner caps



LIMITED LIFETIME  
WARRANTY

## Countertop Options

- .063" thick Stainless Steel Commercial Grade with welded and polished corners
- Stainless Steel laminate
- Butcher Block
- Gray Laminate

STAINLESS STEEL  
**COMMERCIAL GRADE**



**DURA-TOP**  
COUNTERTOPS





## **Stainless Steel Laminate**

Provides a clean, industrial feel while being resistant to corrosion and easy to maintain—ideal for professional and home garages.



## **Stainless Steel Commercial Grade**

This top flaunts welded and polished corners providing a clean, industrial feel while being resistant to corrosion and easy to maintain.



## **Butcher Block**

Crafted for both function and style, providing a warm, natural surface that's tough enough for heavy use while enhancing your workspace's aesthetic.



## **Gray Laminate**

Offers a sleek, minimalist look with a durable surface that resists scratches and stains—great for any workspace requiring both style and toughness.



# GARAGES



**Hangar Cabinets**  
Cloquet, Minnesota

Your garage should work as hard as you do. With our custom aluminum cabinets, your space will be ready to tackle any task. We work with you to craft the ultimate garage. Powder coating, precision fasteners, and hardware, as well as a clear anodized finish, make these cabinets a lifelong asset.

Have an idea of what you're looking for or starting from ground zero? We can bring your vision to life.



# Garage Envy

**The best aluminum garage cabinets in the industry.**

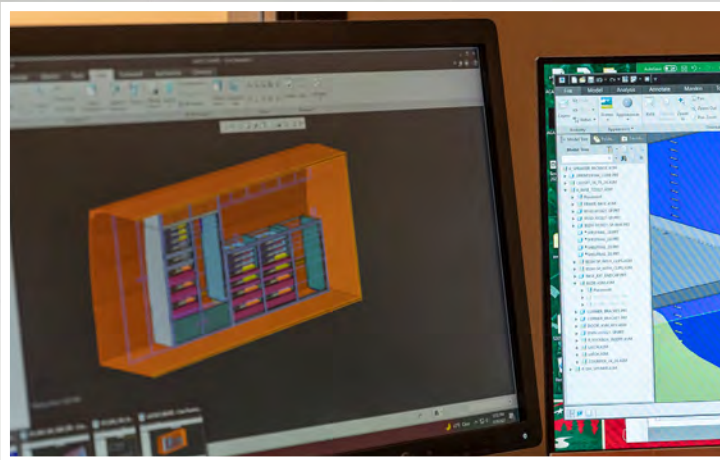


# The Garage. Your home away from home.

Any size, any configuration. You dream it, we design it.

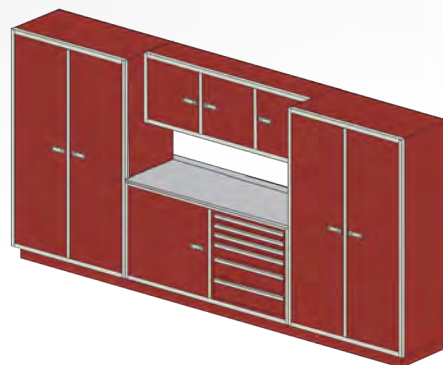


Every one of our aluminum base cabinets is built to last. Crafted from durable 0.080" aluminum and finished with your choice of one of our signature powder coat colors, they're built to withstand tough conditions. Choose from stainless steel or butcher block countertops to suit your workspace needs. With our *Dura-Latch* system, you'll never have to worry about drawers or doors opening unexpectedly, ensuring secure storage. Whether you need a standard size or a custom solution, we have you covered.



## In-house design services

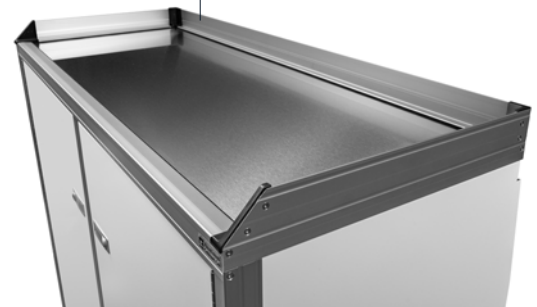
Our precision-designed and manufactured cabinets start with our in-house experts. Working with you and your vision to ensure your cabinets fit your desired needs. All part of our process that comes standard on every project that flows through our facility.





# Garage Base Cabinets | \$1,050–\$3,450\*

All our aluminum base cabinets are crafted to deliver both durability and functionality. Constructed from 0.080" thick aluminum and featuring a durable powder-coated finish available in various colors, these cabinets are designed to endure challenging environments. We offer versatile *Dura-Top* countertop options, including stainless steel commercial grade, stainless steel laminate, gray laminate, and butcher block, allowing you to choose the perfect surface for your specific needs.



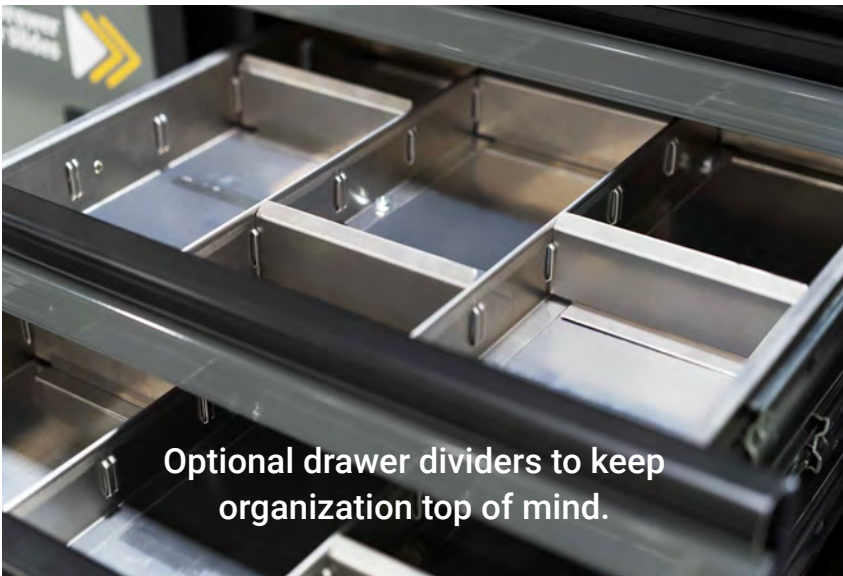
- Countertop Options
- Stainless laminate
  - Stainless one-piece
  - Butcher Block
  - Gray laminate

\* Pricing reflects range of standard size cabinets and subject to change. Call for most accurate quote.



## With Optional Drawers | \$2,100–\$5,150\*

Our drawer units are all aluminum and lightweight. We equip each one with a clear anodized extruded handle that stays shut no matter what. Dubbed our “Dura-Latch” system, we developed it alongside a University of Minnesota Duluth professor. It’s a unique touch you won’t find at any other fabricator. No matter the space, we can build to suit your needs.



Optional drawer dividers to keep organization top of mind.



**DURA-LATCH**  
DRAWER SYSTEM



## Cabinet Features

- Cabinet panels & doors constructed from high quality 0.080" aluminum
- Extruded aluminum frames with a clear anodized finish for strength and durability
- Double walled doors with bonded 0.040" thick aluminum door backs
- Full-length continuous aluminum door hinges add strength
- Internal shelf rails allow shelves to be adjusted from top to bottom
- Comes standard with one 0.080" aluminum shelf with brackets per bay
- Precision fasteners and hardware are used for a clean, professional look
- CAD designed and CNC manufactured to assure the highest quality fit & finish that is second to none
- All cabinets come fully assembled and ready for easy installation
- Fully-framed/Bottom frame rail
- Clear anodized, two-piece, extruded aluminum drawer handle
- Durable powder-coated finish
- Drawers can be added to any base
- 250lbs, full-extension, drawer slides



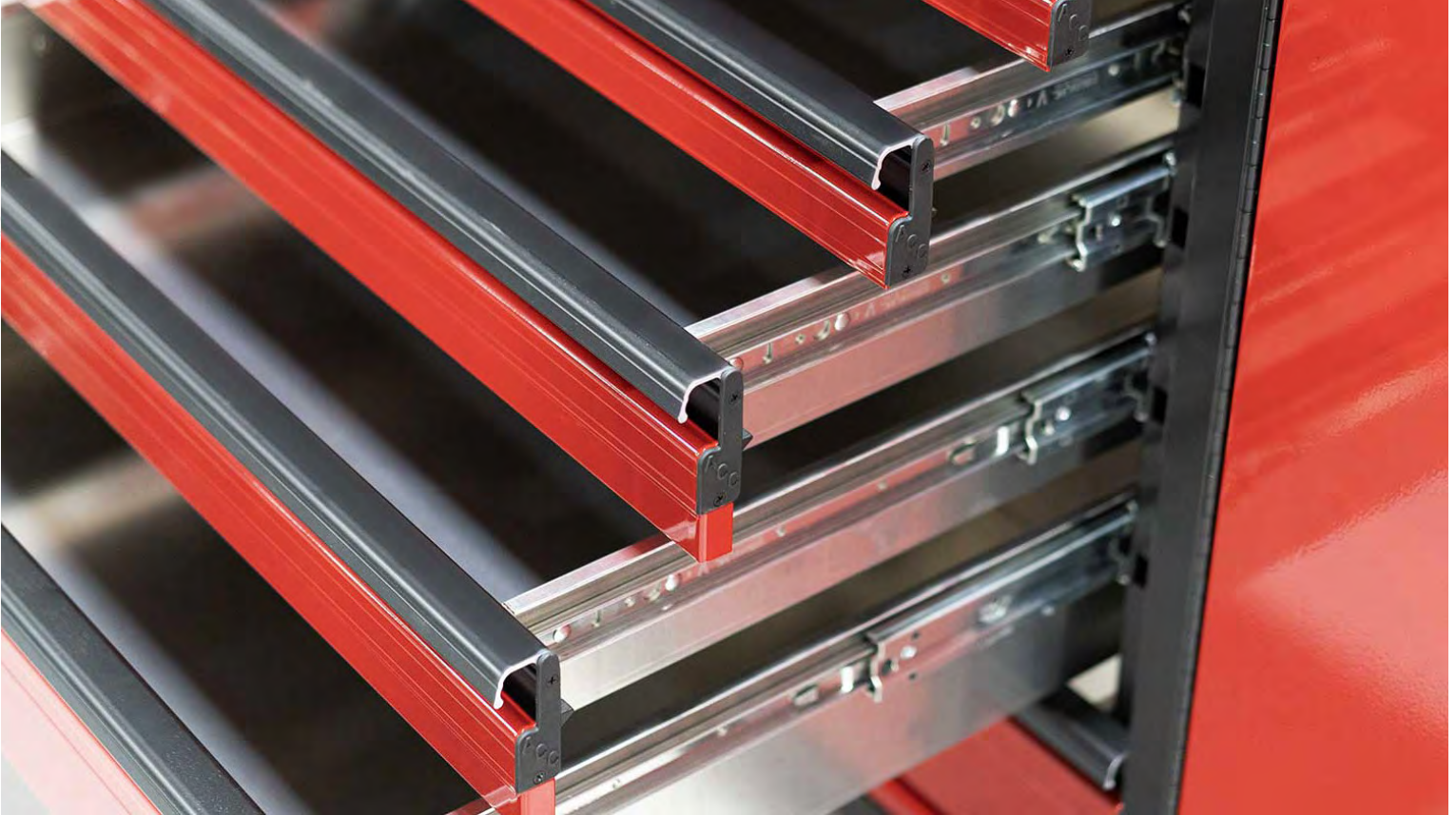
**LIMITED LIFETIME WARRANTY**

## Cabinet Options

- Countertop Options:  
*Stainless laminate, Stainless steel commercial, Butcher Block, Gray laminate*
- Complete multi-drawer systems featuring our **Dura-Latch** system
- Drawer over door featuring our **Dura-Latch** system
- Panel notching available for obstructions
- Choice of Left-hand or Right-hand door swings
- Additional shelves and hardware
- Cabinet bottoms & backs
- Custom powder coat colors – *Additional costs may apply*
- Powder-coated frames
- Drawer heights range from 3" to 16"+
- Divider combinations available for sectioning individual drawers
- Locking doors
- Parts bin drawer
- 4" toe kick







Width [inches]	Height [Inches]	Depth [Inches]	Doors	Shelves	Drawers**	P/N
24	38	24	1	1	NA	BC243824-1
24	38	24	0	0	1	DBC243824-1
48	38	24	2	2	NA	BC483824-2
48	38	24	1	1	1	DBC483824-2
60	38	24	2	2	NA	BC603824-2
60	38	24	1	1	1	DBC603824-2
72	38	24	2	2	NA	BC723824-2
72	38	24	1	1	1	DBC723824-2
96	38	24	3	3	NA	BC963824-3
96	38	24	2	2	1	DBC963824-3
24	38	18	1	1	NA	BC243818-1
24	38	18	0	0	1	DBC243818-1
48	38	18	2	2	NA	BC483818-2
48	38	18	1	1	1	DBC483818-2
60	38	18	2	2	NA	BC603818-2
60	38	18	1	1	1	DBC603818-2
72	38	18	2	2	NA	BC723818-2
72	38	18	1	1	1	DBC723818-2
96	38	18	3	3	NA	BC963818-3
96	38	18	2	2	1	DBC963818-3

\* STANDARD BASE CABINETS ARE SUPPLIED WITH OUR DURA-TOP STAINLESS STEEL LAMINATE COUNTERTOP.

\*\* STANDARD 7-DRAWER LAYOUT IS (FROM TOP TO BOTTOM); 3-3", 2-5", & 2-7" DRAWERS.  
ASK US ABOUT ALMOST UNLIMITED DRAWER LAYOUTS.



## Garage Wall Cabinets | \$365-\$1,600\*

Store just what you need right where you need it with our aluminum garage wall cabinets. Each one is built with 5052 aluminum and powder coated with one of our signature colors. You can customize your wall cabinets to your liking. Choose between left-hand or right-hand door swings. Comes standard with one adjustable shelf or bay. Whatever your vision is, we can make it happen.



\* Pricing reflects range of standard size cabinets and subject to change. Call for most accurate quote.

## Cabinet Features

- Cabinet panels & doors constructed from high-quality 0.063" – 5052 aluminum
- Extruded aluminum frames with clear anodized finish for strength and durability
- Double walled doors with bonded 0.040" thick aluminum door backs
- Cabinet doors are secured with a flush trigger door latch
- Full-length continuous aluminum door hinges add strength
- Internal shelf rails allow shelves to be adjusted from top to bottom
- Comes standard with one 0.063" aluminum shelf with brackets per bay
- Durable powder-coated finish in any of our standard colors
- Precision fasteners and hardware are used for a clean professional look
- CAD designed and CNC manufactured to assure the highest quality fit & finish that is second to none



**LIMITED LIFETIME WARRANTY**

## Cabinet Options

- Choice of Left-hand or Right-hand door swings
- Additional shelves and hardware
- Cabinet back in 0.040" white aluminum
- Radius Pans
- LED 12V flush puck lighting
- Custom powder coat colors – *Additional cost may apply*
- Powder-coated frames
- All cabinets come fully assembled and ready for easy installation
- *Ask us about knock down options to save on shipping.*  
*Not available on all cabinets*



Width [Inches]	Height [Inches]	Depth [Inches]	Doors**	Shelves	P/N
24	24	14	1	1	WC242414-1
48	24	14	2	2	WC482414-2
72	24	14	3	3	WC722414-3
96	24	14	4	4	WC962414-4
24	16	14	1	1	WC241614-1
48	16	14	2	2	WC481614-2
72	16	14	3	3	WC721614-3
96	16	14	4	4	WC961614-4

\* STANDARD SIZES NOTED - ASK US ABOUT OUR CUSTOM SIZE OPTIONS.

\*\* DOUBLE DOOR OPTIONS AVAILABLE FOR SMALLER SPACES.



## Garage Closet Cabinets | \$1,200–\$3,100\*

Bring sleek organization into your home or garage with our aluminum closet cabinets. We can custom-make them for any space. Each one is always made with top-of-the-line 5052 aluminum manufactured in the Midwest. Our standard design comes with one shelf per bay, but we can build it to suit your storage needs. Each unit comes already put together and set for installation.



Silver-vein finish pictured



\* Pricing reflects range of standard size cabinets and subject to change. Call for most accurate quote.

## Cabinet Features

- Cabinet panels & doors constructed from high quality 0.080" – 5052 aluminum
- Extruded aluminum frames with a clear anodized finish for strength and durability
- Double walled doors with bonded 0.040" thick Aluminum door backs
- Full-length continuous aluminum door hinges add strength
- Internal shelf rails allow shelves to be adjusted from top to bottom
- Comes standard with one 0.080" aluminum shelf with brackets per bay
- Durable powder-coated finish in any of our standard colors
- Precision fasteners and hardware are used for a clean, professional look
- CAD designed and CNC manufactured to assure the highest quality fit & finish that is second to none
- All cabinets come fully assembled and ready for easy installation



**LIMITED LIFETIME WARRANTY**

## Cabinet Options

- Aluminum roll-up doors
- Panel notching available for obstructions
- Choice of Left-hand or Right-hand door swings
- Additional shelves and hardware
- Cabinet bottom
- Cabinet backs
- Locking door latches
- 4" toe kick
- Custom powder coat colors – *Additional cost may apply*
- Clothes hanger bar



Width [Inches]	Height [Inches]	Depth [Inches]	Doors**	Shelves	P/N
24	75	24	1	1	CL247524-1
36	75	24	1	1	CL367524-1
48	75	24	2	2	CL487524-2
60	75	24	2	2	CL607524-2
72	75	24	2	2	CL727524-2
24	75	18	1	1	CL247518-1
36	75	18	1	1	CL367518-1
48	75	18	2	2	CL487518-2
60	75	18	2	2	CL607518-2
72	75	18	2	2	CL727518-2

\* **STANDARD SIZES NOTED - ASK US ABOUT OUR CUSTOM SIZE OPTIONS.**

\*\* **DOUBLE DOOR OPTIONS AVAILABLE FOR SMALLER SPACES.**



# CARGO VANS



The road's waiting — and with Aluminum Cabinet's marine-grade, lightweight aluminum van cabinetry, carts, and accessories for organizing, you'll be set to go. Whether it's for work or play, let us get you on the road.

No matter how you use your cargo van, we have the quality options you need. Drawers, closets, stainless or butcher block counters to radius corners and tight wall contours to fit your van. Aluminum Cabinet Co. is the leader in providing the options you need with an eye for detail that makes your van the best it can be.

**MERCEDES SPRINTER**  
**FORD TRANSIT**  
**DODGE PROMASTER**  
**LOCKSMITHS**



# Van Experts

**The best aluminum cargo van  
cabinets in the industry.**



# CUSTOM FOR YOUR INDUSTRY

## Organization is essential in your business.

We understand that you have special needs when it comes to your work van. Tough. Organized. Efficient. Our aluminum cargo van cabinets will last forever and make you the envy of your competition.



Mobile Service



Mobile Service



Mobile Marketing



Dog Grooming





## Cabinet Features

- Individual latching drawers with our *Dura-Latch* system.
- Variable drawer sizes are available, in almost unlimited layouts.
- Shallow drawers and drawer divider system for small parts, screws, nuts, etc.
- Designs that allow drawers to open in directions to make your space efficient.
- Can open to the outside of the van so you don't have to get in the van all the time.
- Spaces for step stools and ladders with our wheel well cabinets, closet cabinets, and larger drawers.



LIMITED LIFETIME WARRANTY

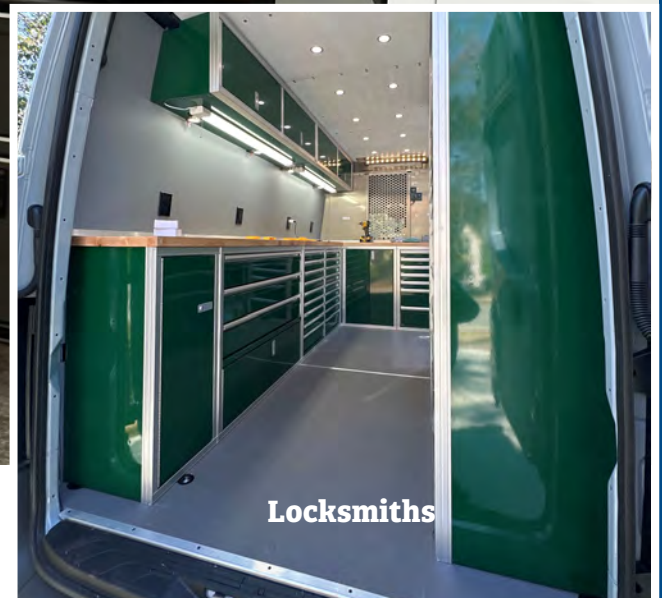
### Dura-Latch Drawer Units



### Drawer Dividers



### Convenient Configurations





## Van Base Cabinets | \$1,050-\$3,200\*

Every one of our aluminum van base cabinets is built to last. We always use .080" aluminum and powder coat with a choice of one of our signature colors, ensuring durability. We offer versatile *Dura-Top* countertop options, including stainless steel commercial grade, stainless steel laminate, gray laminate, and butcher block, allowing you to choose the perfect surface for your specific needs.





## With Optional Drawers | \$2,100–\$5,150\*

Our van drawer units are all aluminum and lightweight. We equip each one with a clear anodized extruded handle that stays latched even on the roughest roads. Dubbed our *Dura-Latch* system, we developed it alongside a University of Minnesota Duluth professor. It's a unique touch you won't find at any other fabricator. Our fabrication specialist makes sure that the powder coat finish matches your cabinet colors. Whether your van is used for work or hobbies, we can build it to suit your needs.





## Cabinet Features

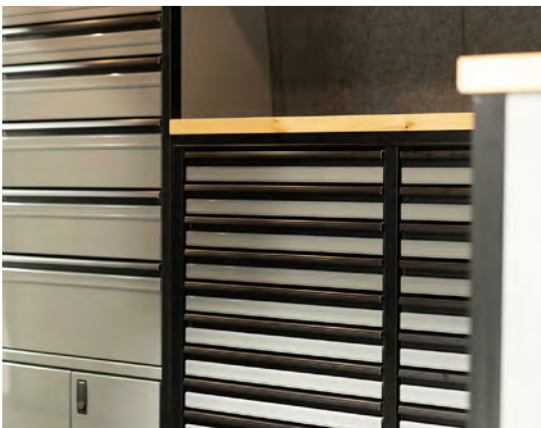
- Cabinet panels & doors constructed from high quality 0.080" aluminum
- Extruded aluminum frames with a clear anodized finish for strength and durability
- Double walled doors with bonded 0.040" thick aluminum door backs
- Cabinet doors are secured with a flush trigger door latch
- Full-length continuous aluminum door hinges add strength
- Internal shelf rails allow shelves to be adjusted from top to bottom
- Comes standard with one 0.080" aluminum shelf with brackets per bay
- Durable powder-coated finish in any of our standard colors
- 250 lbs, full-extension, drawer slides
- Precision fasteners and hardware are used for a clean, professional look
- CAD designed and CNC manufactured to assure the highest quality fit & finish that is second to none
- All cabinets come fully assembled and ready for easy installation



LIMITED LIFETIME WARRANTY

## Cabinet Options

- Countertop Options:  
*Stainless laminate, Stainless steel commercial, Butcher Block, Gray laminate*
- Complete multi-drawer systems featuring our **Dura-Latch** system
- 3" deep drawer over door featuring our **Dura-Latch** system
- Lift off doors
- Double doors for tight spaces
- Panel notching available for wheel wells or obstructions
- Choice of Left-hand or Right-hand door swings
- Additional shelves and hardware
- Cabinet bottom & backs
- Locking door latches and drawers
- 4" toe kick
- File cabinet applications for a mobile command center, EMS, or concession trailers
- Drawer heights range from 3" to 16"+
- Divider combinations available for sectioning individual drawers
- Parts bin drawers





Width [Inches]	Height [Inches]	Depth [Inches]	Doors	Shelves	Drawers**	P/N
24	38	20	1	1	NA	VBC243820-1
24	38	20	0	0	1	VDBC243820-1
48	38	20	2	2	NA	VBC483820-2
48	38	20	1	1	1	VDBC483820-2
60	38	20	3	3	NA	VBC603820-3
60	38	20	2	2	1	VDBC603820-3
72	38	20	3	3	NA	VBC723820-3
72	38	20	2	2	1	VDBC723820-3
96	38	20	4	4	NA	VBC963820-4
96	38	20	3	3	1	VDBC963820-4
24	38	18	1	1	NA	VBC243818-1
24	38	18	0	0	1	VDBC243818-1
48	38	18	2	2	NA	VBC483818-2
48	38	18	1	1	1	VDBC483818-2
60	38	18	3	3	NA	VBC603818-3
60	38	18	2	2	1	VDBC603818-3
72	38	18	3	3	NA	VBC723818-3
72	38	18	2	2	1	VDBC723818-3
96	38	18	4	4	NA	VBC963818-4
96	38	18	3	3	1	VDBC963818-4

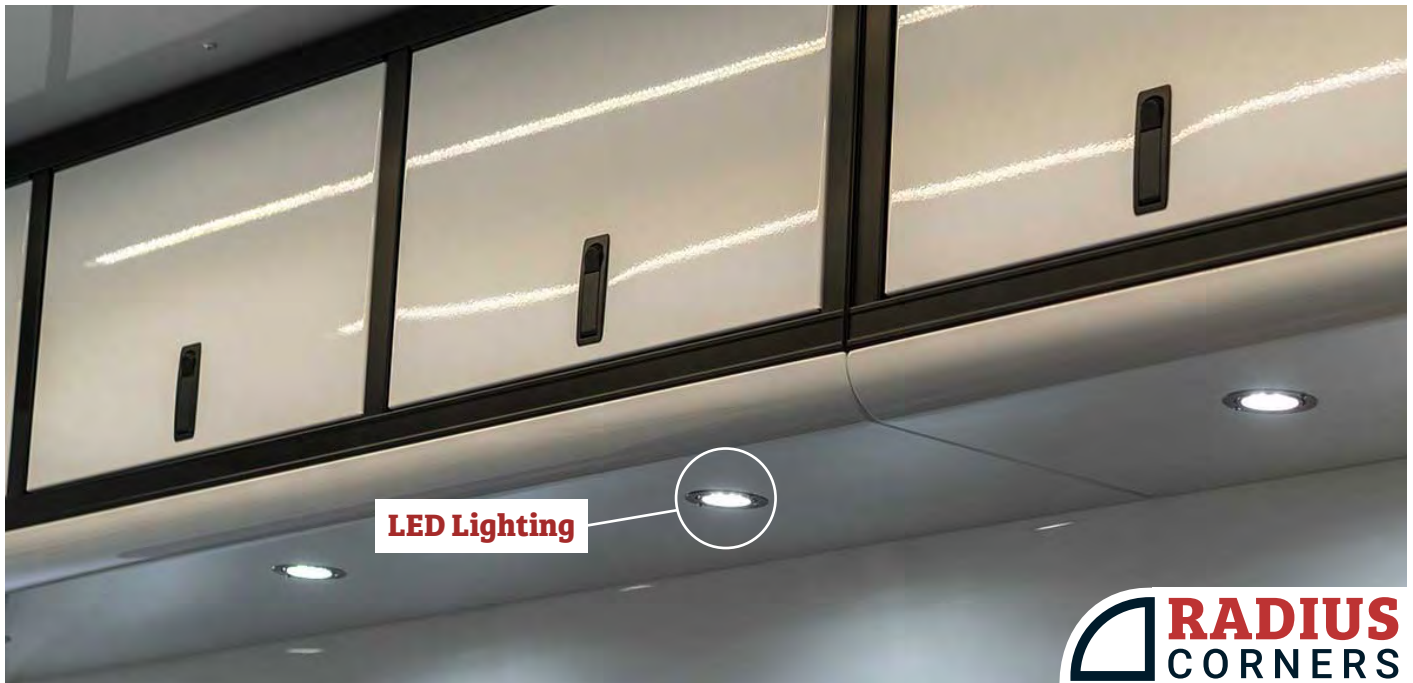
\* STANDARD BASE CABINETS ARE SUPPLIED WITH OUR DURA-TOP STAINLESS STEEL LAMINATE COUNTERTOP.

\*\* STANDARD 7-DRAWER LAYOUT IS (FROM TOP TO BOTTOM); 3-3", 2-5", & 2-7" DRAWERS.  
ASK US ABOUT ALMOST UNLIMITED DRAWER LAYOUTS.



# Van Overhead Cabinets | \$325-\$1,280\*

Make the most of any overhead space with our aluminum van overhead cabinets. Each one can be custom-built to your specific needs and is always designed using CAD and CNC manufacturing processes. Our 5052 aluminum ensures that every piece has lasting power. We even add LED 12V flush puck lighting to make sure you can find exactly what you're looking for. Overhead cabinets are notched and profiled for each specific van make and model.



**GAS SHOCK  
DOOR OPENERS**

\* Pricing reflects range of standard size cabinets and subject to change. Call for most accurate quote.

## Cabinet Features

- Cabinet panels & doors constructed from high quality 0.063" – 5052 aluminum
- Extruded aluminum frames with a clear anodized finish for strength and durability
- Double walled doors with bonded 0.040" thick aluminum door backs
- Cabinet doors are secured with a flush trigger door latch
- Full-length continuous aluminum door hinges add strength
- Gas spring door assists come as standard equipment
- Durable powder-coated finish in any of our standard colors
- Precision fasteners and hardware are used for a clean, professional look
- CAD designed and CNC manufactured to assure the highest quality fit & finish that is second to none



**LIMITED LIFETIME WARRANTY**

## Cabinet Options

- Cabinet back in 0.040" white aluminum
- Locking door latches
- LED 12V flush puck lighting
- Custom powder coat colors – *Additional cost may apply*
- Radius pans
- All cabinets come fully assembled and ready for easy installation
- *Ask us about knock down options to save on shipping.*

*Not available on all cabinets*



Width [Inches]	Height [Inches]	Depth [Inches]	Doors	P/N
24	16	14	1	VOH241614-1
36	16	14	1	VOH361614-1
48	16	14	1	VOH481614-1
48	16	14	2	VOH481614-2
60	16	14	2	VOH601614-2
72	16	14	2	VOH721614-2
96	16	14	3	VOH961614-3
24	14	14	1	VOH241414-1
36	14	14	1	VOH361414-1
48	14	14	1	VOH481414-1
48	14	14	2	VOH481414-2
60	14	14	2	VOH601414-2
72	14	14	2	VOH721414-2
96	14	14	3	VOH961414-3

**\* STANDARD SIZES NOTED - ASK US ABOUT OUR CUSTOM SIZE OPTIONS.**



# Van Closet Cabinets | \$1,200-\$3,100\*

Bring sleek organization into your van with our aluminum closet cabinets. We can custom-make them for any space. Each cabinet is always made with top-of-the-line 5052 aluminum manufactured in the Midwest. Our standard design comes with one shelf per bay, but we can build it to suit your storage needs. Each unit comes already put together and set for installation.



**Wall Contour Notch**



**Seamless Wall Contours**



\* Pricing reflects range of standard size cabinets and subject to change. Call for most accurate quote.



## Cabinet Features

- Cabinet panels & doors constructed from high quality 0.080" – 5052 aluminum
- Extruded aluminum frames with a clear anodized finish for strength and durability
- Double walled doors with bonded 0.040" thick aluminum door backs
- Cabinet doors are secured with a flush trigger door latch
- Full-length continuous aluminum door hinges add strength and adjustability
- Internal shelf rails allow shelves to be adjusted from top to bottom
- Comes standard with one 0.080" aluminum shelf with brackets per bay
- Durable powder-coated finish in any of our standard colors
- Precision fasteners and hardware are used for a clean, professional look
- CAD designed and CNC manufactured to assure the highest quality fit & finish that is second to none
- All cabinets come fully assembled and ready for easy installation



**LIMITED LIFETIME WARRANTY**

## Cabinet Options

- Aluminum roll-up doors
- Cabinet backs
- Panel notching available for wheel wells or obstructions
- Choice of Left-hand or Right-hand door swings
- Additional shelves and hardware
- Cabinet bottom
- Locking door latches
- 4" toe kick
- Custom powder coat colors – *Additional cost may apply*
- Clothes hanger bar



Width [Inches]	Height [Inches]	Depth [Inches]	Doors**	Shelves	P/N
24	75	20	1	1	VCL247520-1
36	75	20	1	1	VCL367520-1
48	75	20	2	2	VCL487520-2
60	75	20	2	2	VCL607520-2
72	75	20	2	2	VCL727520-2
24	75	18	1	1	VCL247518-1
36	75	18	1	1	VCL367518-1
48	75	18	2	2	VCL487518-2
60	75	18	2	2	VCL607518-2
72	75	18	2	2	VCL727518-2

\* STANDARD SIZES NOTED - ASK US ABOUT OUR CUSTOM SIZE OPTIONS.

\*\* DOUBLE DOOR OPTIONS AVAILABLE FOR SMALLER SPACES.



# TRAILERS

Let's transform your transport. If your trailer needs something extra in the storage department, we're the ones for the job. Our aluminum cabinets are built with the finest craftsmanship and top-of-line tools. Each section is made of 5052 aluminum, the most durable and corrosion-resistant stuff on the market. Whether it's for racing or utility trailers, our job isn't complete until you're completely happy. Let's get going. Connect with us today.

No assembly is necessary. We do the work for you. No more spending a week assembling your cabinets from a parts list written in 8 languages. Select from precise fitting standard components or custom-built designs created especially for you.



Made in  
the USA

# Trailer Pros

**The best aluminum trailer  
cabinets in the industry.**





**THE BEST FOR YOU**

# Racing. Utility. V-Nose.

Outfit your racing trailer with precision-engineered aluminum cabinets designed to handle the rigors of the road and track. Whether you need custom storage for tools, parts, or equipment, our durable, lightweight cabinets provide secure, organized solutions.

Featuring our signature *Dura-Latch* system to keep everything in place. Available in a range of colors, these cabinets are built to withstand the high demands of racing trailers, utility setups, and V-nose configurations. Achieve both function and style with storage that's built to last.

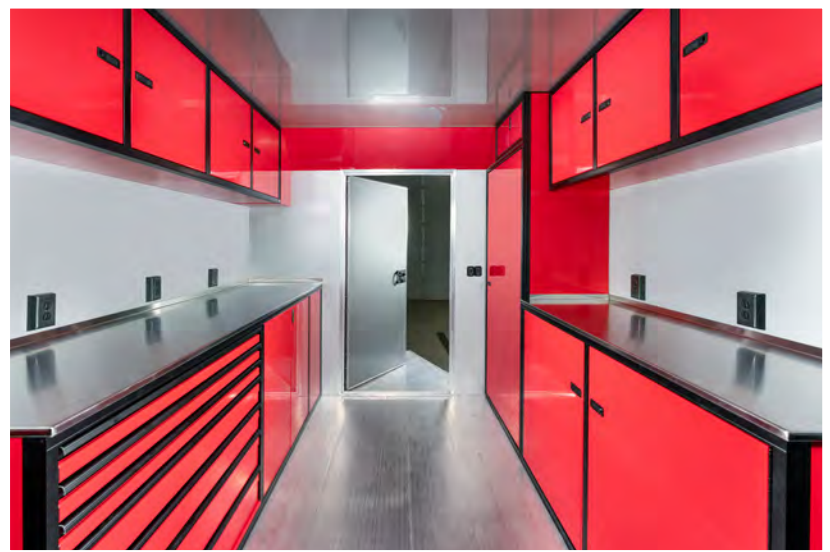


**LIMITED LIFETIME WARRANTY**

**“I race all over the upper Midwest. I don’t have time to play games. I trust Aluminum Cabinet Co. cabinets to help me stay organized and competitive.”**

**Jody Bellefeuille**  
*Accurate Auto Repair owner  
and Wisconsin Dirt Track Champion*







# Known for V-Nose

Get the most out of your V-nose trailer space with our customized base and overhead cabinets. Our V-nose base cabinets come with a 1/8" thick 1-pc powder-coated aluminum countertop or 1-pc stainless steel commercial grade. You can have it built specifically for your trailer's needs. We can modify the side and back splashes per your requirements as well.



LIMITED LIFETIME WARRANTY

These cabinets are a great place to house things like inverters, batteries, winches, etc. With our latching system, you can feel calm knowing your drawers and doors won't open while driving. We also supply adjustable countertop supports to tie into the walls for added support, which means less stress and more miles.





## Cabinet Features

- Cabinet panels & doors constructed from high-quality .080" aluminum
- Extruded aluminum frames with a clear anodized finish for strength and durability
- Double walled doors with bonded 0.040" thick aluminum door backs
- Cabinet doors are secured with a flush trigger door latch (locking option available)
- Full-length continuous aluminum door hinges add strength and adjustability
- Internal shelf rails allow shelves to be adjusted from top to bottom
- Durable powder-coated finish in any of our standard colors
- Precision fasteners and hardware are used for a clean, professional look
- CAD designed and CNC manufactured to assure the highest quality fit & finish that is second to none
- All cabinets come fully assembled and ready for easy installation



**Request a V-Nose Quote**



# Trailer Base Cabinets | \$1,050–\$3,450\*

Every one of our aluminum trailer base cabinets is built to last. We always use .080" aluminum and powder coat with a choice of one of our signature colors, ensuring durability. We offer versatile *Dura-Top* countertop options, including stainless steel commercial grade, stainless steel laminate, gray laminate, and butcher block, allowing you to choose the perfect surface for your specific needs.



\* Pricing reflects range of standard size cabinets and subject to change. Call for most accurate quote.





## With Optional Drawers | \$2,100–\$5,150\*

Our trailer drawer units are all aluminum and lightweight. We equip each one with a clear anodized extruded handle that stays latched shut even on the roughest roads. Dubbed our “Dura-Latch” system, we developed it alongside a University of Minnesota Duluth professor. It’s a unique touch you won’t find at any other fabricator. Whether you’re hauling gear or equipment, we can custom-build your drawers to perfectly suit your needs.





## Cabinet Features

- Cabinet panels & doors constructed from high quality 0.080" aluminum
- Extruded aluminum frames with a clear anodized finish for strength and durability
- Double-walled doors with bonded 0.040" thick aluminum door backs
- Cabinet doors are secured with a flush trigger door latch
- 250 lbs, full-extension, drawer slides on all drawers
- Full-length continuous aluminum door hinges add strength
- Internal shelf rails allow shelves to be adjusted from top to bottom
- Comes standard with one 0.080" aluminum shelf with brackets per bay
- Durable powder-coated finish in any of our standard colors
- Precision fasteners and hardware are used for a clean, professional look
- CAD designed and CNC manufactured to assure the highest quality fit & finish that is second to none



LIMITED LIFETIME WARRANTY

## Cabinet Options

- Countertop Options:  
*Stainless laminate, Stainless steel commercial, Butcher Block, Gray laminate*
- Complete multi-drawer systems featuring our *Dura-Latch* system
- 3" deep drawer over door featuring our *Dura-Latch* system
- Lift off doors
- Panel notching available for wheel wells or obstructions
- Choice of Left-hand or Right-hand door swings
- Additional shelves and hardware
- Cabinet bottom & backs
- Locking doors
- File cabinet applications for a mobile command center, EMS, or concession trailers
- Drawer heights range from 3" to 16"+
- Divider combinations available for sectioning individual drawers
- Parts bins





Width [Inches]	Height [Inches]	Depth [Inches]	Doors	Shelves	Drawers**	P/N
24	38	24	1	1	NA	TBC243824-1
24	38	24	0	0	1	TDBC243824-1
48	38	24	2	2	NA	TBC483824-2
48	38	24	1	1	1	TDBC483824-2
60	38	24	2	2	NA	TBC603824-2
60	38	24	1	1	1	TDBC603824-2
72	38	24	2	2	NA	TBC723824-2
72	38	24	1	1	1	TDBC723824-2
96	38	24	3	3	NA	TBC963824-3
96	38	24	2	2	1	TDBC963824-3
24	38	18	1	1	NA	TBC243818-1
24	38	18	0	0	1	TDBC243818-1
48	38	18	2	2	NA	TBC483818-2
48	38	18	1	1	1	TDBC483818-2
60	38	18	2	2	NA	TBC603818-2
60	38	18	1	1	1	TDBC603818-2
72	38	18	2	2	NA	TBC723818-2
72	38	18	1	1	1	TDBC723818-2
96	38	18	3	3	NA	TBC963818-3
96	38	18	2	2	1	TDBC963818-3

\* STANDARD BASE CABINETS ARE SUPPLIED WITH OUR DURA-TOP STAINLESS STEEL LAMINATE COUNTERTOP.

\*\* STANDARD 7-DRAWER LAYOUT IS (FROM TOP TO BOTTOM); 3-3", 2-5", & 2-7" DRAWERS.  
ASK US ABOUT ALMOST UNLIMITED DRAWER LAYOUTS.



## Trailer Overhead Cabinets | Starting at \$370\*

Make the most of any overhead space with our aluminum trailer overhead cabinets. Each one can be custom-built to your specific needs and is always designed using CAD technology and CNC manufacturing. Our 5052 aluminum ensures that every piece has lasting power. We even add LED 12V flush puck lighting to make sure you can find exactly what you're looking for.



## Cabinet Features

- Cabinet panels & doors constructed from high quality 0.063" – 5052 aluminum
- Extruded aluminum frames with a clear anodized finish for strength and durability
- Double walled doors with bonded 0.040" thick aluminum door backs
- Cabinet doors are secured with a flush trigger door latch
- Full-length continuous aluminum door hinges add strength
- Durable powder-coated finish in any of our standard colors
- Precision fasteners and hardware are used for a clean, professional look
- CAD designed and CNC manufactured to assure the highest quality fit & finish that is second to none
- All cabinets come fully assembled and ready for easy installation
- *Ask us about knock down options to save on shipping.*



LIMITED LIFETIME WARRANTY

## Cabinet Options

- Top corners mitered to fit cove moldings
- Cabinet back in 0.040" white aluminum or 0.063"
- Aluminum powder coated to match
- Locking door latches
- Custom powder coat colors
- Radius pans



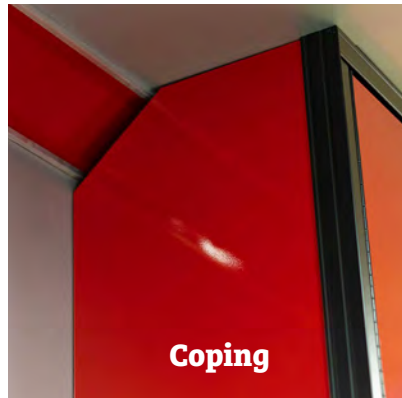
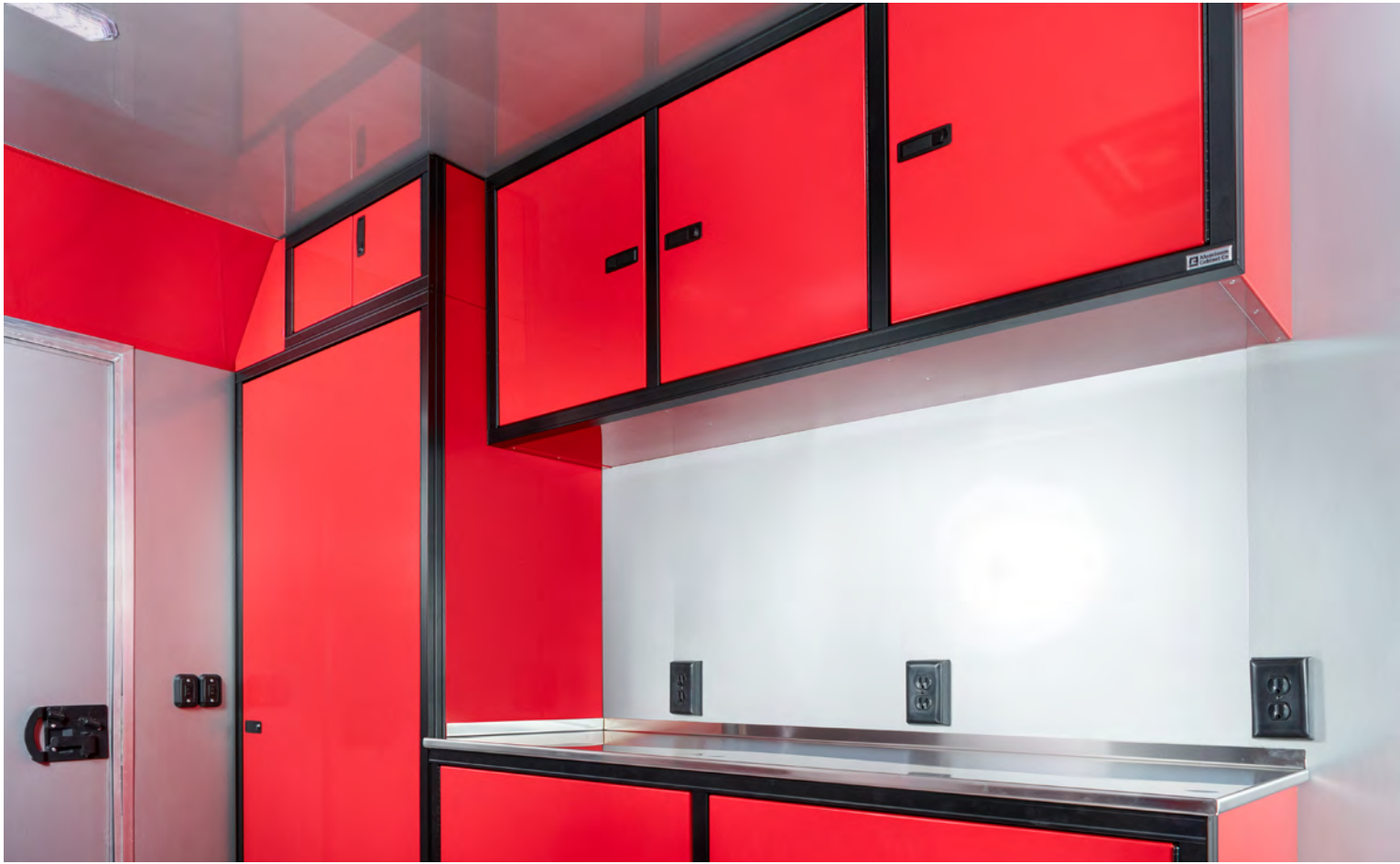
Width [Inches]	Height [Inches]	Depth [Inches]	Doors	P/N
24	16	14	1	TOH241614-1
36	16	14	1	TOH361614-1
48	16	14	1	TOH481614-1
48	16	14	2	TOH481614-2
60	16	14	2	TOH601614-2
72	16	14	2	TOH721614-2
96	16	14	3	TOH961614-3
24	14	14	1	TOH241414-1
36	14	14	1	TOH361414-1
48	14	14	1	TOH481414-1
48	14	14	2	TOH481414-2
60	14	14	2	TOH601414-2
72	14	14	2	TOH721414-2
96	14	14	3	TOH961414-3

\* STANDARD SIZES NOTED - ASK US ABOUT OUR CUSTOM SIZE OPTIONS.



# Trailer Wall Cabinets | \$365-\$1,600\*

Store just what you need right where you need it with our aluminum trailer wall cabinets. Each one is built with 5052 aluminum and powder coated with one of our signature colors. Our doors come with a flush trigger door latch and .040" thick door backs. You can customize your wall cabinets to your liking. Choose between left-hand or right-hand door swings. Add shelves or mount hangers. Whatever your vision is, we can make it happen.



\* Pricing reflects range of standard size cabinets and subject to change. Call for most accurate quote.



## Cabinet Features

- Cabinet panels & doors constructed from high-quality 0.063" – 5052 aluminum
- Extruded aluminum frames with a clear anodized finish for strength and durability
- Double walled doors with bonded 0.040" thick aluminum door backs
- Cabinet doors are secured with a flush trigger door latch
- Full-length continuous aluminum door hinges add strength
- Internal shelf rails allow shelves to be adjusted from top to bottom
- Comes standard with one 0.063" aluminum shelf with brackets
- Durable powder-coated finish in any of our standard colors
- Precision fasteners and hardware are used for a clean, professional look
- CAD designed and CNC manufactured to assure the highest quality fit & finish that is second to none
- All cabinets come fully assembled and ready for easy installation



**LIMITED LIFETIME WARRANTY**

## Cabinet Options

- Choice of Left-hand or Right-hand door swings
- Additional shelves and hardware
- Cabinet back in 0.040" white Aluminum
- Locking door latches
- LED 12V flush puck lighting
- Top corners mitered to fit cove moldings
- Custom powder coat colors – *Additional cost may apply*
- Radius pan



Width [Inches]	Height [Inches]	Depth [Inches]	Doors**	Shelves	P/N
24	24	14	1	1	TWC242414-1
48	24	14	2	2	TWC482414-2
72	24	14	3	3	TWC722414-3
96	24	14	4	4	TWC962414-4
24	16	14	1	1	TWC241614-1
48	16	14	2	2	TWC481614-2
72	16	14	3	3	TWC721614-3
96	16	14	4	4	TWC961614-4

\* STANDARD SIZES NOTED - ASK US ABOUT OUR CUSTOM SIZE OPTIONS.

\*\* DOUBLE DOOR OPTIONS AVAILABLE FOR SMALLER SPACES.



# Trailer Closet Cabinets | \$1,200–\$3,100\*

Bring sleek organization into your trailer with our aluminum closet cabinets. We can custom-make them for any space. Each one is always made with top-of-the-line 5052 aluminum and manufactured in the Midwest. Our standard design comes with one shelf per bay, but we can build it to suit your storage needs. Each unit comes already put together and set for installation.



Locking door latches

\* Pricing reflects range of standard size cabinets and subject to change. Call for most accurate quote.



## Cabinet Features

- Cabinet panels & doors constructed from high-quality 0.080" – 5052 aluminum
- Extruded aluminum frames with a clear anodized finish for strength and durability
- Double walled doors with bonded 0.040" thick aluminum door backs
- Cabinet doors are secured with a flush trigger door latch
- Full-length continuous aluminum door hinges add strength
- Internal shelf rails allow shelves to be adjusted from top to bottom
- Comes standard with one 0.080" aluminum shelf with brackets per bay
- Durable powder-coated finish in any of our standard colors
- Precision fasteners and hardware are used for a clean, professional look
- CAD designed and CNC manufactured to assure the highest quality fit & finish that is second to none
- All cabinets come fully assembled and ready for easy installation



**LIMITED LIFETIME WARRANTY**

## Cabinet Options

- Aluminum roll-up doors
- Panel notching available for wheel wells or obstructions
- Top corners mitered to fit cove moldings
- Choice of Left-hand or Right-hand door swings
- Additional shelves and hardware
- Cabinet bottom
- Cabinet backs
- Locking door latches
- Custom powder coat colors – *Additional cost may apply*



Width [Inches]	Height [Inches]	Depth [Inches]	Doors	Shelves	P/N
24	75	24	1	1	TCL247524-1
36	75	24	1	1	TCL367524-1
48	75	24	2	2	TCL487524-2
60	75	24	2	2	TCL607524-2
72	75	24	2	2	TCL727524-2
24	75	18	1	1	TCL247518-1
36	75	18	1	1	TCL367518-1
48	75	18	2	2	TCL487518-2
60	75	18	2	2	TCL607518-2
72	75	18	2	2	TCL727518-2

\* STANDARD SIZES NOTED - ASK US ABOUT OUR CUSTOM SIZE OPTIONS.

\*\* DOUBLE DOOR OPTIONS AVAILABLE FOR SMALLER SPACES.



# Trailer Wheel-Well Cabinets | Starting at \$710\*

Every one of our aluminum trailer wheel-well cabinets is built to last. We always use .063" aluminum and powder coat with a choice of one of our signature colors, ensuring durability. So whether you're looking for a standard size or a custom one, we can provide the right stuff for your stuff.



\* Pricing reflects range of standard size cabinets and subject to change. Call for most accurate quote.

## Cabinet Features

- Cabinet panels & doors constructed from high-quality 0.063" – 5052 aluminum
- Extruded aluminum frames with a clear anodized finish for strength and durability
- Double walled doors with bonded 0.040" thick aluminum door backs
- Cabinet doors are secured with a flush trigger door latch
- Full-length continuous aluminum door hinges add strength
- Internal shelf rails allow shelves to be adjusted from top to bottom
- Durable powder-coated finish in any of our standard colors
- Precision fasteners and hardware are used for a clean, professional look
- CAD designed and CNC manufactured to assure the highest quality fit & finish that is second to none
- All cabinets come fully assembled and ready for easy installation



**LIMITED LIFETIME WARRANTY**

## Cabinet Options

- Custom-made to fit flush over any trailer wheel well
- Top corners mitered to fit cove moldings
- Choice of Left-hand or Right-hand door swings
- Aluminum powder coated to match
- Additional shelves and hardware
- Cabinet back
- Locking door latches
- Custom powder coat colors



Width [Inches]	Height [Inches]	Depth [Inches]	Doors	Shelves	P/N
24	60	8	1	3	TWW24608-1
48	60	8	2	6	TWW48608-2
70	60	8	3	9	TWW70608-3
72	60	8	3	9	TWW72608-3
94	60	8	4	12	TWW94608-4
96	60	8	4	12	TWW96608-4
24	75	8	1	3	TWW24758-1
48	75	8	2	6	TWW48758-2
70	75	8	3	9	TWW70758-3
72	75	8	3	9	TWW72758-3
94	75	8	4	12	TWW94758-4
96	75	8	4	12	TWW96758-4

**\* STANDARD SIZES NOTED - ASK US ABOUT OUR CUSTOM SIZE OPTIONS.**



# EMERGENCY RESPONSE



TRUSTED BY  
 **rosenbauer**

**“The quality of their products is robust, clean, and smooth. Everyone is always impressed at the final product.”**

**Tony Klanderud**  
*Post Sales Manager, Rosenbauer MN  
Rosenbauer America, LLC*

# Helping to save lives.

Let's transform your emergency response vehicle. When it comes to outfitting your vehicle with reliable and efficient storage, we're the experts you can trust. Our aluminum cabinets are crafted with precision using 5052 aluminum, known for its superior durability and corrosion resistance—ideal for the rugged demands of emergency response.

We'll make sure every inch of your storage is optimized, ensuring your equipment is secure and accessible when it matters most. No assembly is needed—we handle it all so you can focus on what's important. Whether you need standard or custom-built cabinets, we've got you covered. Let's get your vehicle ready for action—connect with us today.



# Durable Response



**LEADERS IN EMERGENCY RESPONSE**

# Custom Solutions



Our expert team works closely with clients to design and fabricate command centers and emergency response vehicles that maximize efficiency and functionality, ensuring that every element—from storage solutions to workstation layouts—aligns seamlessly with operational requirements. With our commitment to high-quality materials and craftsmanship, we provide command centers that are not only sturdy and reliable, but also designed to enhance productivity in critical situations.



# Truck Body Units | Starting at \$325\*

Every one of our aluminum truck body base cabinets is built to last. We always use .080" aluminum and powder coat with a choice of one of our signature colors, ensuring durability. Our *Dura-Latch* system means you never have to worry about latched drawers and doors opening. So whether you're looking for a standard size or a custom one, we can provide the right stuff for your stuff.

TRUSTED BY



**“Everything fit perfectly, and we think they look great. Thank you, guys, for helping us look good!”**

**Andy Duecker, Parts Manager**  
*Sentinel Emergency Solutions*



## Cabinet Options

- Drawer heights range from 3" to 16"+
- Divider combinations available for sectioning individual drawers
- Drawer liners



LIMITED LIFETIME WARRANTY





# Command Centers

 **Made in the USA**

**LIMITED LIFETIME WARRANTY**



TRUSTED BY

# EATI

EMERGENCY AUTOMOTIVE TECHNOLOGIES, INC.

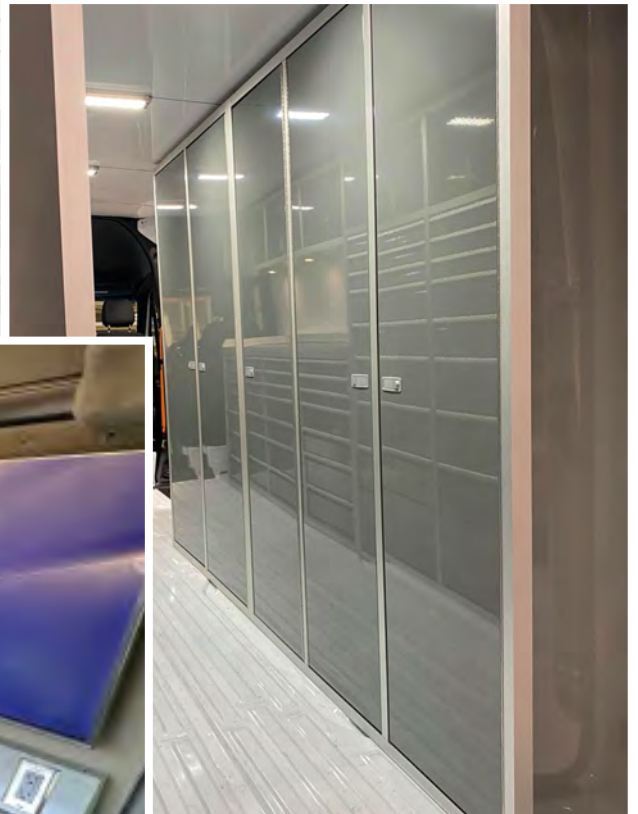
**“Sometimes our clients need innovative ways to store and access their equipment. ACC always delivers.”**

**Lisa Grahek, VP, EATI**

*Leading Emergency Vehicle Upfitter in the Midwest*

EATIMN.COM







**CARTS AND ACCESSORIES**



**Made in  
the USA**

**LIMITED LIFETIME  
WARRANTY**

# Storage Options

**Keeping your stuff together**





# Caster Carts

Our caster carts are designed for versatility and mobility in various environments. Built from durable aluminum, these carts are lightweight yet robust, making them ideal for easily transporting equipment and supplies. Our caster carts are customizable to fit your specific needs, featuring adjustable shelves, secure storage compartments, and smooth-rolling wheels for effortless maneuverability.



# Accessories

Outfit your garage to be the ultimate taskmaster. We not only build aluminum cabinets, but craft accessories that only add to your setup. From a folding workstation to a wall toolbox, we can build to match your space or create a unique piece. Not ready to commit to a whole garage redo? Start with one of these accessories, and see how durable our handiwork can be.



LIMITED LIFETIME WARRANTY



## Wall Unit

Our wall units are designed to maximize your vertical space while providing easy access to tools and supplies. With various configurations and storage options, our wall units offer both functionality and style.



## Aerosol Can Rack

Keep your aerosol cans organized and easily accessible with our specialized aerosol can rack. Designed to securely hold various sizes, these racks help maintain a clutter-free workspace while ensuring your cans are readily available for use.



## Folding Work Station

Our folding work stations give you the room you need in tight spaces. The ability to fold down a work station makes it a must-have. The work top locks in closed position with a spring pin and can be finished to match any current space.



## Helmet Rack

Designed to accommodate multiple helmets, these racks ensure that your gear is organized and protected. With customizable options, you can create a helmet rack that perfectly fits your space while keeping your equipment easily accessible.

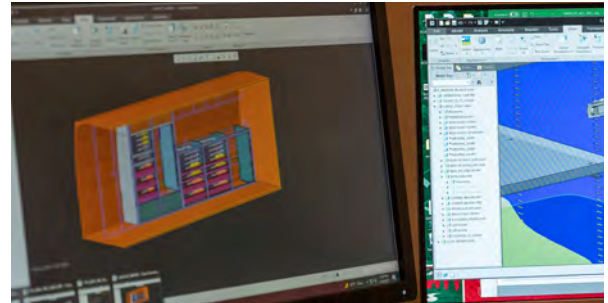


# The Ease of Working with Us.

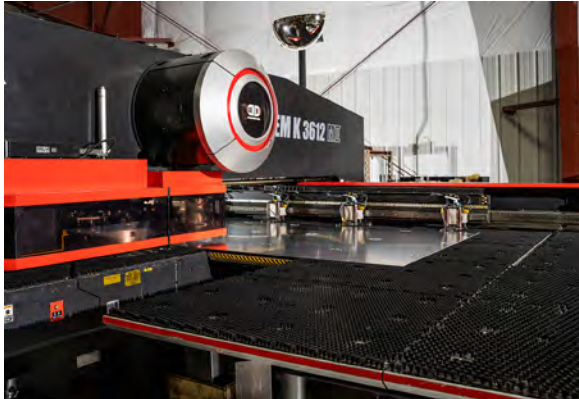
Our commitment to customer satisfaction and tailored solutions offer a seamless experience for our clients. From the initial consultation to the final installation, our team collaborates closely with clients to understand their needs and preferences. We offer a wide range of customizable products, ensuring that every project aligns perfectly with your vision. Our expert craftsmanship, combined with efficient service, means you can trust us to deliver high-quality, durable aluminum products that enhance your space. We make the entire process straightforward.

**“Thanks all for your help, this has been the simplest part of our spin up.”**

**Joshua Rogers**  
*Regional Petroleum Ops Manager*  
*Cleveland Brothers*



**1. We work with you to design the cabinet package that fits your wants and needs.**



**2. We create the cabinet components with the most advanced, precision CNC technology.**



**3. Built with detailed, in-house experience and know-how down to the final assembly.**

Our quotes are free, allowing you to explore your options without any commitment. Simply reach out with your project details, and our team will respond promptly to deliver a fast and accurate estimate tailored to your needs. We aim to provide clarity and transparency, ensuring you have all the information you need to make informed decisions.



**Request a Quote**



**Request a V-Nose Quote**



**Contact Us**

## Made For You. Made in the USA.

Our American-made aluminum cabinets are built in Duluth, Minnesota, delivering high-quality, customizable aluminum solutions that enhance both functionality and aesthetics in every workspace. We are dedicated to craftsmanship and innovation, ensuring each piece is built to last and tailored to meet your needs. Take your project to the next level with custom aluminum cabinets from Aluminum Cabinet Co.



4930 Lightning Dr. Ste. 1  
Hermantown, MN 55811  
(844) 224-5194  
Fax: (218) 740-0234  
[info@aluminumcabinetco.com](mailto:info@aluminumcabinetco.com)



**Kelly O'Toole**  
*Founder & President*



**Andrea Altmann**  
*Vice President*



**Lee Trueblood**  
*General Manager*



LIMITED LIFETIME  
WARRANTY



[aluminumcabinetco.com](http://aluminumcabinetco.com)

[844] 224-5194

GARAGES | CARGO VANS | TRAILERS | EMERGENCY RESPONSE